



11801

W. OLYMPIC BLVD
LOS ANGELES, CA 90064

**ACCELERATING GROWTH
IN LIFE SCIENCE**

**EXCLUSIVE LIFE SCIENCE SPACE WITH EXISTING
LAB AND INFRASTRUCTURE
12,500 SF - 50,000 SF**



PROPERTY HIGHLIGHTS



50,000 SF Contiguous Space Divisible to 12,500 SF



18'-28' Bow Truss Ceiling & 40' Tower



1,200Amps 277/480 3 Phase Power



Ground Level 14' Loading Door



2 Level Connected Parking Structure



Steps from the Expo Line Bundy Station



Existing BSL-2 Lab

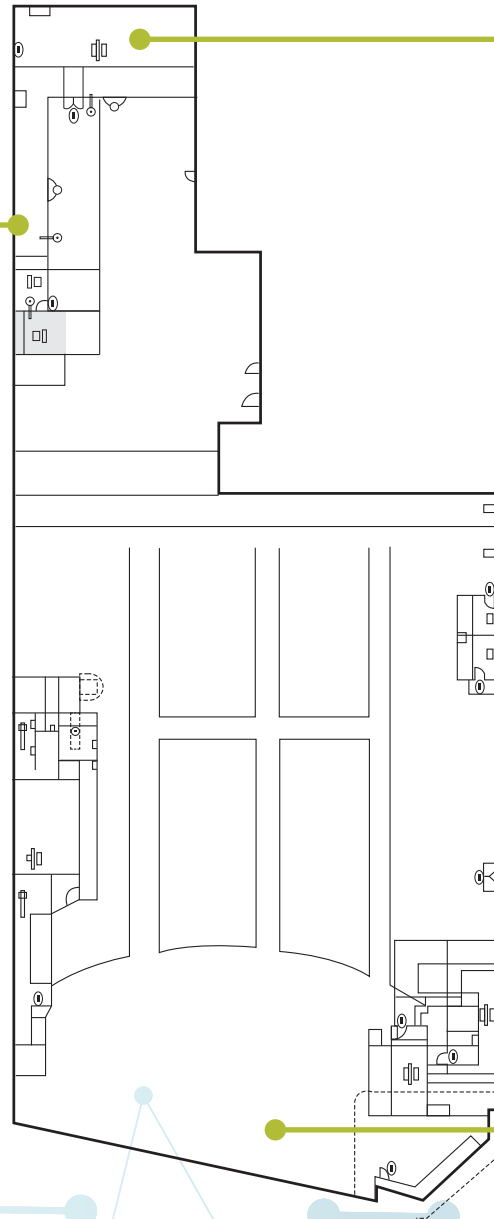


Efficient, Open Floor Plan



Existing Infrastructure for Life Science Users

FLOOR PLAN





11801

W. OLYMPIC BLVD

LOS ANGELES, CA 90064

**LIFE SCIENCE SPACE AVAILABLE
12,500 SF - 50,000 SF**